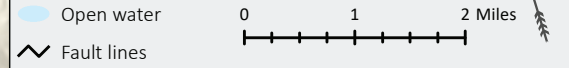


Sonoma Mountain Geology



Quaternary deposits, 2.58 million – present

- h-s - Holocene alluvium, 12,000 years ago to present
- p-s - Late Pleistocene alluvium, 125,000 – 12,000 years ago
- Q-cs - Unmapped deposits
- QT-ss - Gravel deposits
- Q-ab - Tuff and rhyolitic gravel
- QT-ld - Landslide deposits

Glen Ellen Formation, 3.25 million years ago

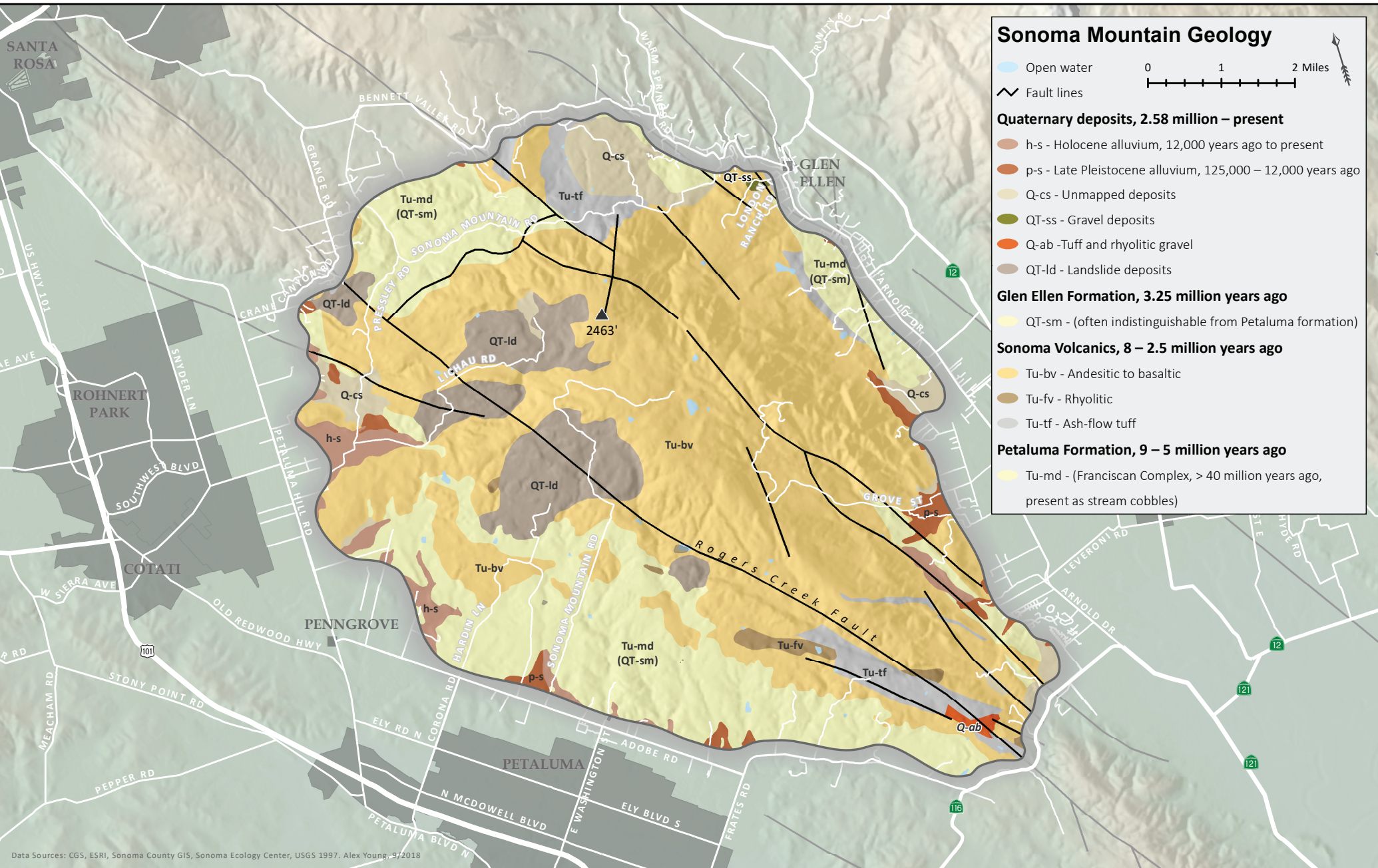
- QT-sm - (often indistinguishable from Petaluma formation)

Sonoma Volcanics, 8 – 2.5 million years ago

- Tu-bv - Andesitic to basaltic
- Tu-fv - Rhyolitic
- Tu-tf - Ash-flow tuff

Petaluma Formation, 9 – 5 million years ago

- Tu-md - (Franciscan Complex, > 40 million years ago, present as stream cobbles)



Data Sources: CGS, ESRI, Sonoma County GIS, Sonoma Ecology Center, USGS 1997. Alex Young, 9/2018